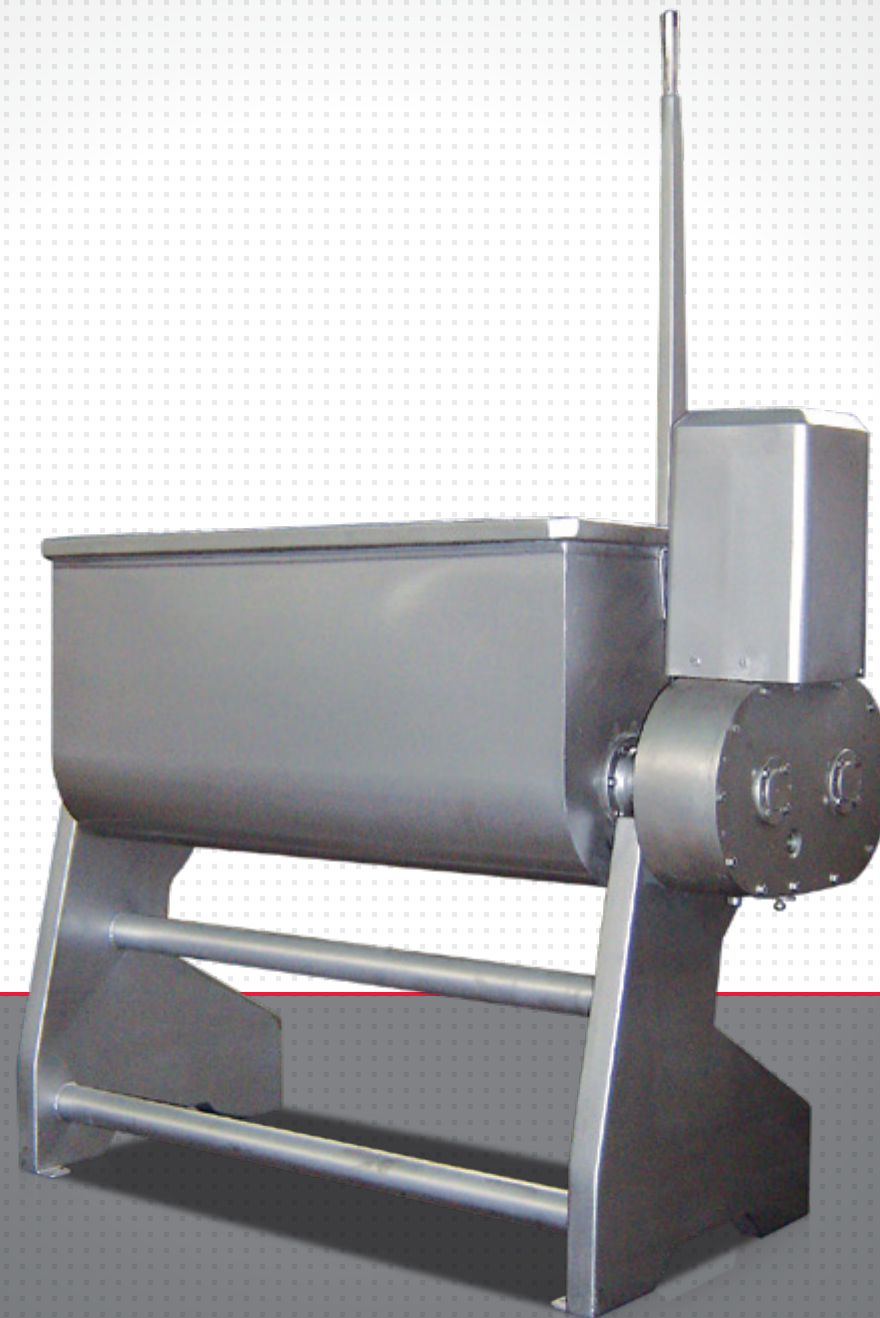
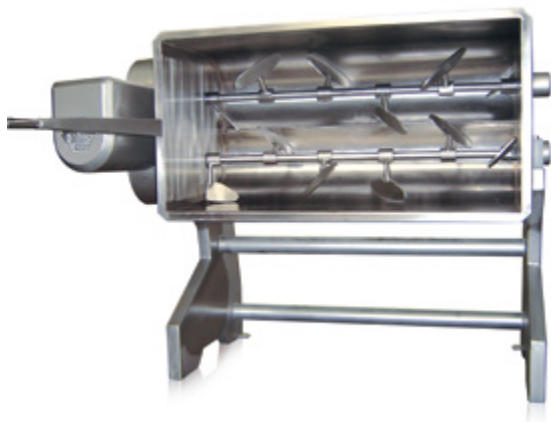


➤ **PALET MIXER**  
WITH COMMON DUMPING

---



*Chiacchiera*



## ▶ PALET MIXER WITH COMMON DUMPING

This machine has been designed to carry out the mixing process through two axes with pallets placed in a helicoidal way which rotate in different ways.

 ENTIRELY BUILT IN  
AISI 304 STAINLESS STEEL

The unloading is done manually. This characteristic of design facilitates a complete and quick unloading of the mixing vat.

### ▶ DRIVER

An oil bath reducer with gears is directly connected with the axes. A three-phase electric motor, 1,500 rpm, 100% armoured is assembled on the reducer.

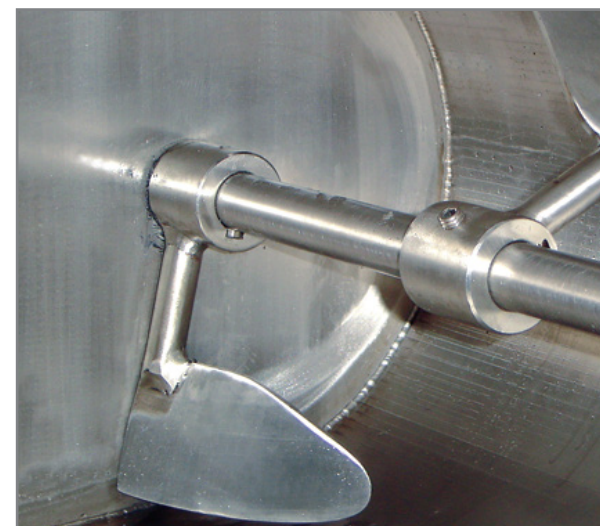
### ▶ CHARACTERISTICS OF CONSTRUCTION

The construction, working and cleaning characteristics are under the public health regulations.

### ▶ MAINTENANCE

The global design of this equipment allows carrying out the maintenance process in a very short period of time; only with a periodic control the greater repairs will be removed.

MODEL	35	50	100	200	300	400
vat capacity (litres)	35	50	100	200	300	400
motor power (hp)	1	1,5	2	3	4	4
type of current (hz)	50/60	50/60	50/60	50/60	50/60	50/60



# Chiacchiera



CERTIFIED COMPANY  
ISO 9001:2015

Dimensions and design are illustrative.  
Customizable machines according to customer specifications.

Contact us for quotation or advice.